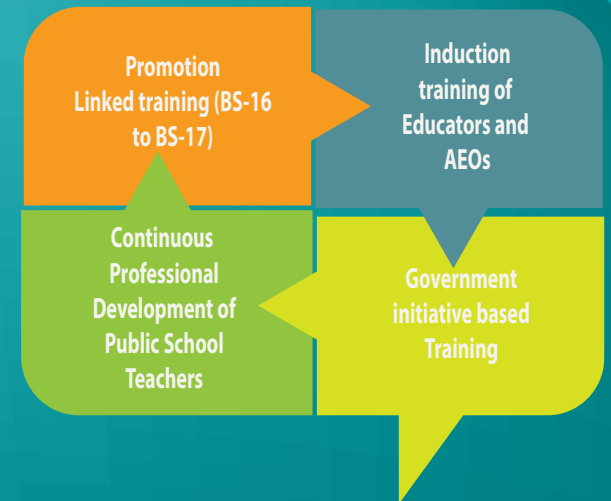
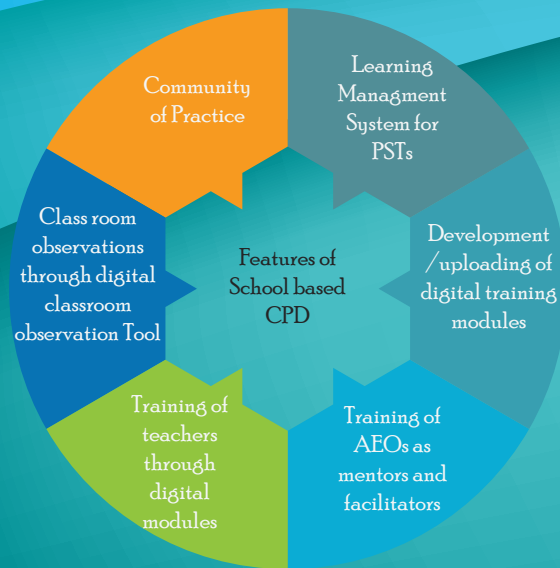


## School based CPD of Primary School Teachers PSTs

To replace the earlier CPD programme and design it more cost effective through introduction of Information Technology and maintain the uniform standard of training, QAED in collaboration with teams of British Council and PESP-II designed a new model of CPD called school based CPD of PSTs.

## Quaid-e-Azam Academy for Educational Development Government of the Punjab

# Field Training Department



QAED launched this new CPD model in 36 districts in December 2020 after successful piloting in 06 districts. QAED is running its different CPD projects like EaSTE and TALEEM Programme on the same model.

+92 111-007-023  
datacentre@qaed.edu.pk  
www.qaed.edu.pk

# Overview

Field training wing of QAED Punjab is mainly responsible for planning and execution of trainings in the field. Generally, these trainings are conducted at the field training outposts of QAED at district, tehsil or cluster level according to the requirement and nature of the trainings. Following are the field trainings conducted by the field training wing

## Promotion Linked training (BS-16 to BS-17)

This training is arranged for the Secondary School Teachers (SSTs) working in BS-16 and proposed eligible for promotion to BS-17 by DPI (SE). This training is 4-week long and is conducted at district level

Promotion Linked training (BS-16 to BS-17) was started in 2014 and now it has become an integral part of promotion credentials of all the candidates eligible for promotion to the next grade

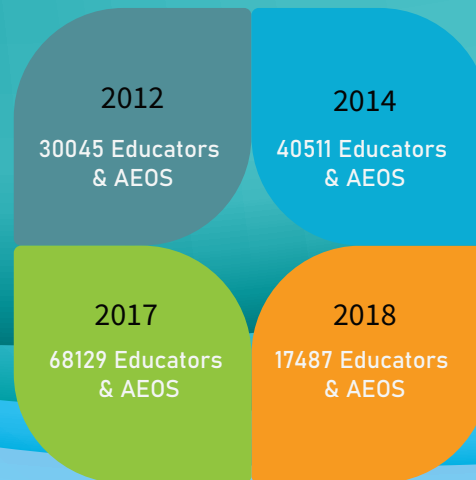
## INDUCTION TRAINING OF EDUCATORS AND AEOs

This training is arranged for newly recruited Educators and AEOs by SED. This is 4-week long training for Educators and 8-week for AEOs. This training is conducted at district / Tehsil level according to the number of trainees.

## CONTINUOUS PROFESSIONAL DEVELOPMENT OF PUBLIC SCHOOL TEACHERS

### CPD programme for Primary School Teachers (PSTs)

QAED then DSD launched a CPD Programme for Primary School Teachers (PSTs) in 2007. In this programme, DSD established 36 District Teachers and support centres (DTSCs) at district level and 2000 Cluster Teachers and support centres (CTSCs) at cluster level. There were also appointed 143 Teacher Educators (TEs) on at 36 DTSCs and 4000 District Teacher Educators (DTEs) were appointed and posted at cluster basis. In this model, cascade approach was followed and CPD of TEs was arranged at DSD. CPD of DTEs through PD days on monthly basis was conducted at DTSCs by TEs, and finally CPD of 180,000 PSTs through assessment of students (Grade 3-5) and mentoring on monthly basis by DTEs. This CPD programme was discontinued in 2017



2016



2019



2021



2022



Induction training was first launched in 2012 and now it has become a regular feature for all new inductees in SED as Educators and AEOs for empowering them through effective induction programme